



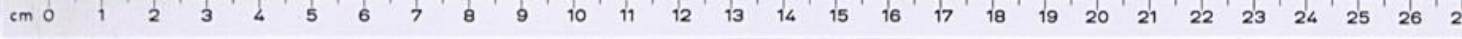
13-1-

1527.

N. 286.

1527.  
Einezendene Brief über ein halben morff ungarisch  
am Niederberg und ein fical ander phinseide

ganzi karte  
et zwelf nach  
tra



*[Faint, handwritten text in a historical script, likely a legal or administrative document. The text is mostly illegible due to fading and bleed-through from the reverse side.]*

