

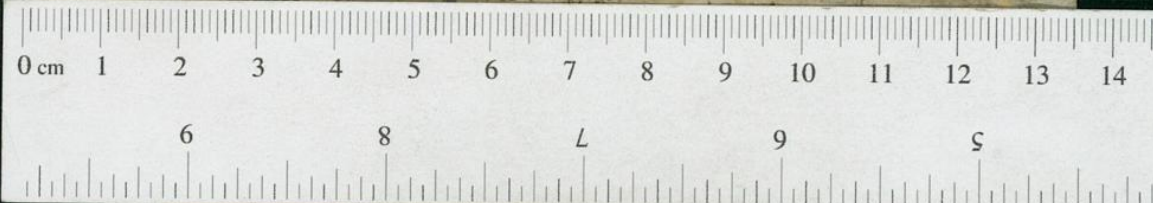
Fragment of a medieval manuscript page with faint, mostly illegible text in a Gothic script. The parchment is heavily stained and damaged, particularly at the top and right edges. The text is arranged in several lines, with some words and phrases being more legible than others. The script is dense and characteristic of the late Middle Ages.

des 45 67

NF 691

1000 lbs 676

Fragment of a parchment document with faint, illegible handwritten text in a medieval script. The parchment is heavily stained and shows signs of significant age and wear.



Fragment of a parchment document with faint, illegible handwritten text. At the bottom, the text "dis 4s 67h" is visible.