

Handwritten text in a historical German script, likely a legal or administrative document. The text is dense and covers most of the page, with some lines appearing to be part of a list or a series of clauses. The script is cursive and characteristic of the late 15th or early 16th century. The document is written on aged, slightly stained paper.



Nr. 194  
1519 Juni 5 (IIA)

Nr. 14.

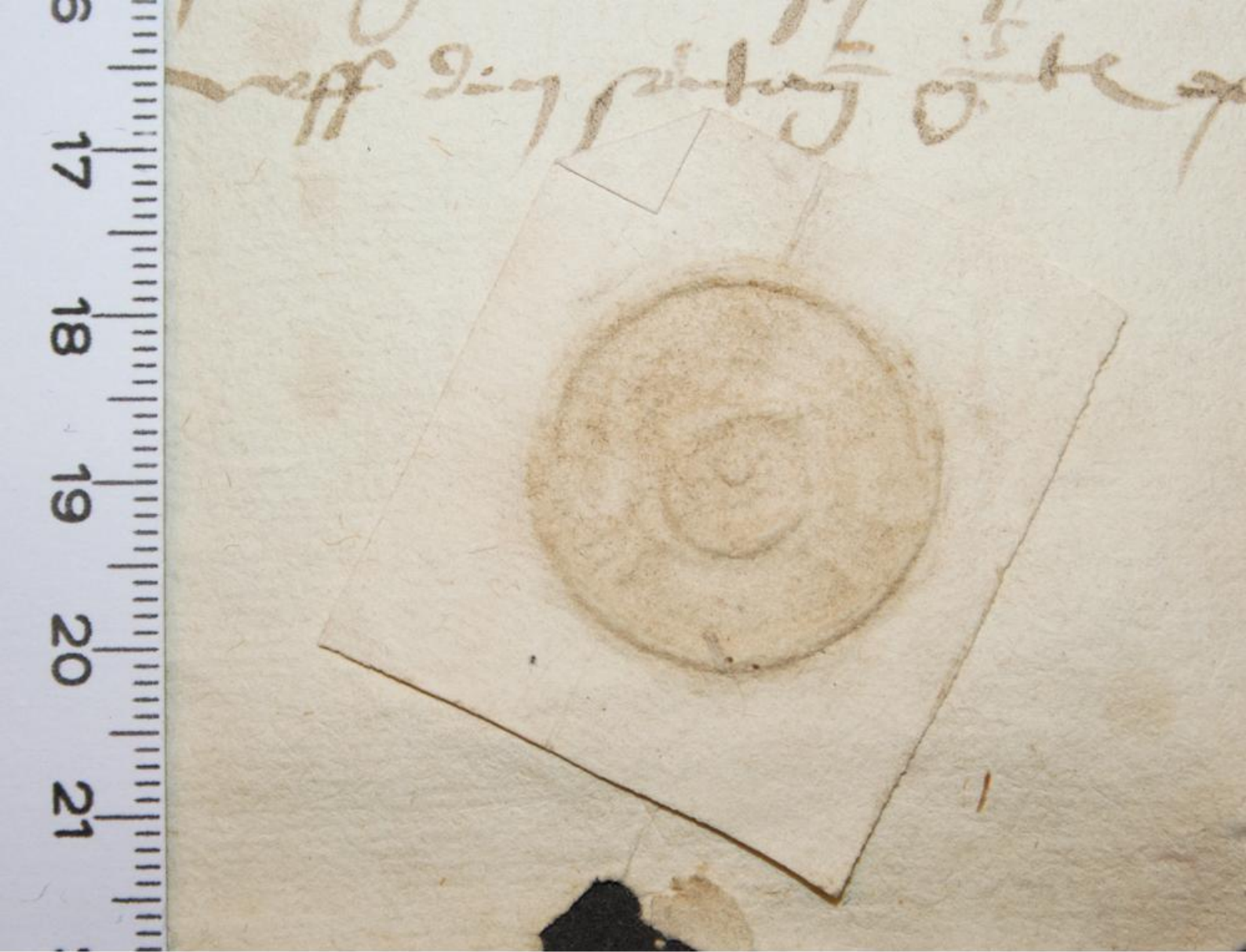
~~15.~~ 15.  
Eui legationi 30 R. Capital  
sent 11. p. p. in carta  
Schiffen  
Ato

15 19.

propter

*Handwritten text in a cursive script, likely a library stamp or inventory record, partially obscured by the paper fragment.*





Handwritten text in a historical German script, likely a manuscript or legal document. The text is dense and covers most of the page.

